

System Manifold Series '4E'

SM4E

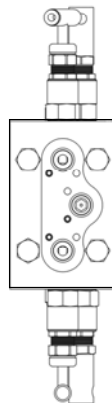
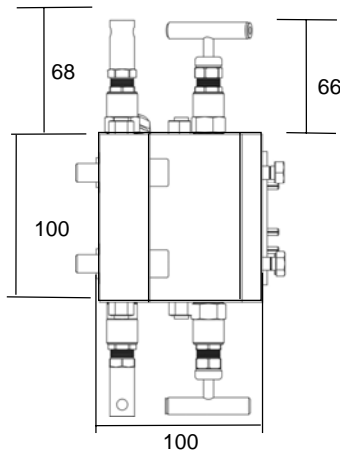
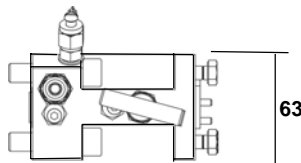
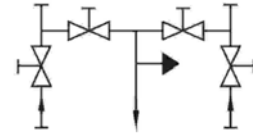
6,000 psi [Pn 408] Rated

10,000 psi [Pn 680] Rated

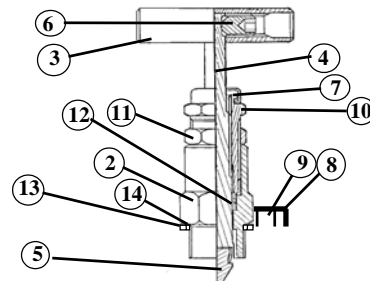
DESIGN FEATURES

- * Top Sealing Bonnet style
- * Robust HIGH pressure design
- * DESIGNED to be maintained
- * NON-Rotating tip as standard
- * Hard TIP for effective shut-off and life
- * Low operating torque
- * Smooth 6 turns from OPEN to CLOSE
- * Back sealing on the stem
- * 316 ss to NACE Specification
- * Mounting Holes as standard
- * Adjustable gland packing SNV Head
- * Vent Port with socket pressure plug as standard
- * Full material traceability
- * Stem Seal below actuating threads to prevent contamination & gauling of threads
- * Metal/Metal bonnet seal for pressure tightness even at elevated temperatures
- * Choice of NE/NL & NS Heads - [NE 6K Only]

System Manifold 4 Valve Manifold Block for Double Isolation and Equalisation. Both Equalise valves are Anti-Tamper style



ITEM	COMPONENT	MATERIAL
1	BODY	316 S 11 *
2	BONNET HOUSING	316 S 11 *
3	HANDLE	316 S 11
4	STEM	316 S 11
5	STEM TIP	17 / 4 PH
6	GRUB SCREW	STAINLESS STEEL
7	DUST CAP	PVC
8	RETAINING CAM	STAINLESS STEEL
9	RETAINING SCREW	STAINLESS STEEL
10	GLAND ADJUSTER	316 S 11
11	LOCK NUT	316 S 11
12	GLAND PACKING	PTFE / GRAPHOIL
13	BONNET GASKET	316 S 11
14	BONNET SEAL	V PTFE



Sample Part Number SM4EP0515NFS NPT [F] 316ss manifold 1/4"NPT [F] Vent, Standard Heads with Anti-Tamper on the Equalise heads

VALVE PART NUMBER and ORDERING TABLE					
Valve Series	Bore	Size	Threads	* Material	Options
SM4EP 6,000 psi/Pn408	05	08 - 1/4"	NF - NPT (F)	A - Ali-Bronze C - C/Steel D - Duplex SS	Tg - Tagging Tm - Metering tip G - Graphoil
SM4EX 10,000 psi/Pn680		15 - 1/2"	PF - BSPP (F) TF - BSPT (F)	H - Hasteloy I - Incoloy M - Monel S - 316 SS X - SPECIAL	Hw - Handwheel - 316 Bk - Bracket · Mounting Holes

We reserve the right to change specifications stated in this leaflet due to our continuing programme of development. All Isolate valves are fitted with 'T' Bar handle and Vent/Equalise valves are Anti-Tamper head as standard.

SM4E-TS -07/05

Colson
Industries Ltd

Website: www.colson.co.uk

e-mail: sales@colson.co.uk



Certificate No LQR 0960294
ISO 9001 Registered

Park Works, Park Road, ELLAND
West Yorkshire. HX5 9HN - England

Tel +44 (0) 845 094 3780
Fax +44 (0) 845 094 3790