

'DFB' Series Block & Bleed VALVES

Flanged Block & Bleed Ball Valves with Needle Valve Vent

DESIGN FEATURES

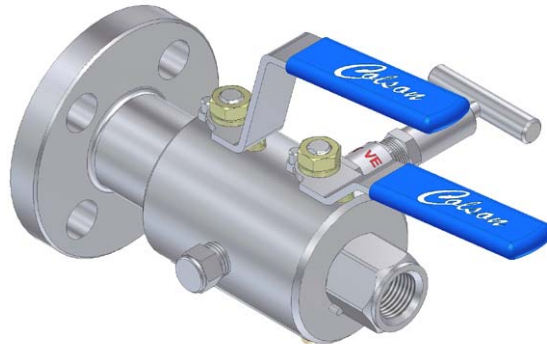
ISOLATE VALVE :-

- * Wide choice of Flange sizes and Pressure ratings.
- * Robust HIGH pressure DESIGNED to be maintained
- * Ball Valve has anti blowout stem for safety
- * Floating ball design for positive shut-off
- * Replaceable seats & seals for extended life

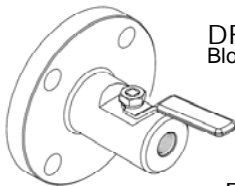
VENT VALVE :-

- * Top Sealing Bonnet style
- * NON-Rotating hard tip on bleed valve for effective shut-off
- * Back sealing on the stem & adjustable gland packing
- * Stem Seal below actuating threads to prevent contamination & gauling of threads
- * Metal/Metal bonnet seal for pressure tightness even at elevated temperatures

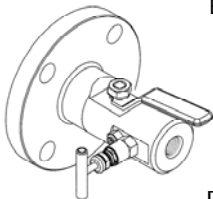
- * Choice of Block, Block & Bleed or Double Block& Bleed
- * Bleed Port with socket pressure plug or Tube fitting
- * 316 ss to NACE Specification, Full material traceability



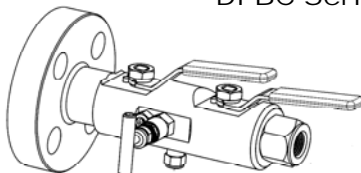
**Fire Tested Design
to BS 6755 Pt 2**



DFBA Series
Block [Isolate] Only



DFBB Series
Block & Bleed



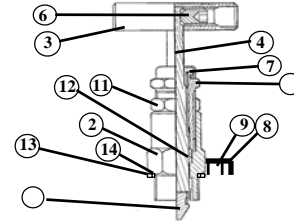
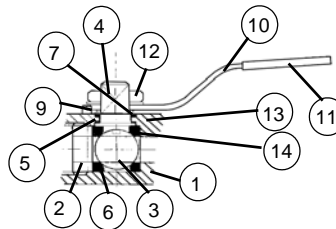
DFBC Series
&

BALL VALVE ASSY

ITEM	COMPONENT	MATERIAL
1	BODY	A182 F316L
2	INSERT	316 S 11
3	BALL	316 S 11
4	STEM	316 S 11
5	STEM SEAL	RTFE
6	SEATS	PTFE / PVDF
7	TOP SEAL	RTFE
8		
9	PIN	STAINLESS STEEL
10	LEVER HANDLE	STAINLESS STEEL
11	HANDLE SLEEVE	PVC
12	NUT	A4 ss
13	WASHER	A4 ss
14	SPACER	316 SS

NS HEAD ASSY

ITEM	COMPONENT	MATERIAL
1	BODY	316 S 11 *
2	BONNET HOUSING	316 S 11
3	HANDLE	316 S 11
4	STEM	316 S 11
5	STEM TIP	17 / 4 PH
6	GRUB SCREW	STAINLESS STEEL
7	DUST CAP	PVC
8	RETAINING CAM	STAINLESS STEEL
9	RETAINING SCREW	STAINLESS STEEL
10	GLAND ADJUSTER	316 S 11
11	LOCK NUT	316 S 11
12	GLAND PACKING	PTFE / GRAPHOIL
13	BONNET GASKET	316 S 11
14	BONNET SEAL	V PTFE



Sample Part Number DFBCMF1025CB15NF1S

1"600lb Serrated Face Flanged Double Block & Bleed Valve [Ball/Needle/Ball Configuration] with PTFE/17-4PH Trim.

VALVE PART NUMBER and ORDERING TABLE									
Series - Style	PRESSURE	BORE	Inlet Size/Type/Finish		Outlet Size/Type/Finish		Vent	* Material	Options
DFBA	F=Flange Rating	10	08	A=C150	A= Smooth	08	A=C150	A - All-Bronze C - C/Steel D - Duplex SS H - Hasteloy I - Incoloy M - Monel S - 316 SS X - SPECIAL	-Tg Tagging -H Handwheel -LK Locking Kit
			10	B=C300	B= Serrated	10	B=C300		
			15	C=C600	C=RTJ	15	C=C600		
			20	D=C800	H=HUB	20	D=C800		
DFBB	A=1,000/68 S=3000/204 P=6000/408 X=10000/680	13	25	E=C900		25	E=C900	3=1/2"NPT 4=1/2BS 5=3/4"NPT 6=3/4BS	-AT AntiTamper Head Unit
			32	F=C1500		32	F=C1500		
			40	G=C2500		40	G=C2500		
			46	NF=NPT(F) NM=NPT(M)		46	NF=NPT(F) NM=NPT(M)		
DFBC	A=1,000/68 S=3000/204 P=6000/408 X=10000/680	13	50			50		6=3/4BS	-ATK A/T Key -HW Handwheel 316 SS
			54	PF=BSPP(F) PM=BSPP(M)		54	PF=BSPP(F) PM=BSPP(M)		
			65			65			

We reserve the right to change specifications stated in this leaflet due to our continuing programme of development.

All Ball valves have lever handle as standard. Anti-Tamper Keys are always supplied separately, for security.

Ball & stem materials will be the same as the body material except for C/Steel which has 316 trim.

DFB - 07/05

Do not repeat the OUTLET PART NUMBER if same as INLET



Website: www.colson.co.uk

e-mail: sales@colson.co.uk



Certificate No L RQ 0960294
ISO 9001 Registered

Park Works, Park Road, ELLAND
West Yorkshire. HX5 9HN - England

Tel +44 (0) 845 094 3780
Fax +44 (0) 845 094 3790