

'DBB' Series Double Block & Bleed

Double Block & Bleed Ball Valves with Needle Valve

6,000 psi [Pn 408] & 10,000 psi [Pn 680] Rated

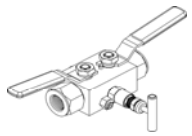
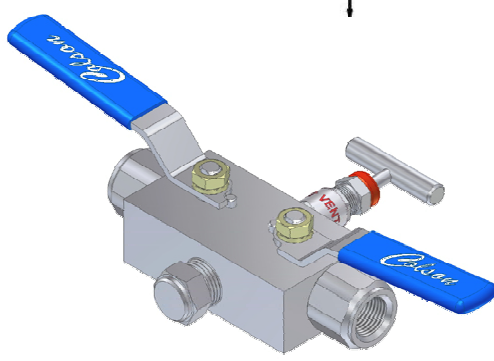
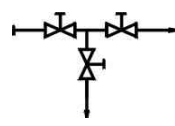
DESIGN FEATURES

ISOLATING BALL VALVE :-

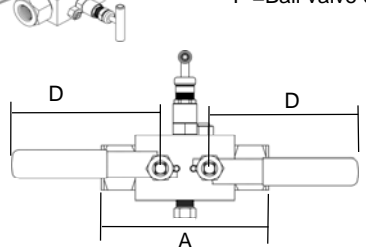
- * Wide choice of Flange sizes and Pressure ratings.
- * Robust HIGH pressure DESIGNED to be maintained
- * Ball Valve has anti blowout stem for safety
- * Floating ball design for positive shut-off
- * Replaceable seats & seals for extended life

NEEDLE VENT VALVE :-

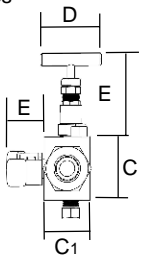
- * Top Sealing Bonnet style
- * NON-Rotating hard tip on bleed valve for effective shut-off
- * Back sealing on the stem & adjustable gland packing
- * Stem Seal below actuating threads to prevent contamination & gauling of threads
- * Metal/Metal bonnet seal for pressure tightness even at elevated temperatures
- * Choice of thread forms
- * 1/4" Bleed Port with pressure plug as standard
- * 316 ss to NACE Specification, Full material traceability



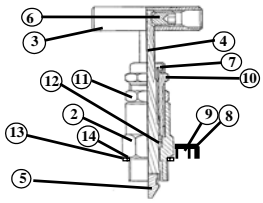
Ab=Block & Bleed Length
 Ac=Double Block & Bleed Length
 B =Bore
 F =Ball valve centres



All valves have 1/4"NPT Vent port as standard

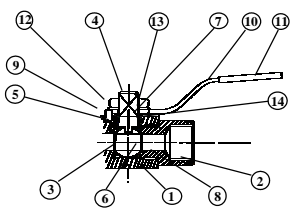


NS HEAD ASSY



| ITEM | COMPONENT | MATERIAL |
|------|-----------------|-----------------|
| 1 | BODY | 316 S 11 |
| 2 | BONNET HOUSING | 316 S 11 |
| 3 | HANDLE | 316 S 11 |
| 4 | STEM | 316 S 11 |
| 5 | STEM TIP | 17 / 4 PH |
| 6 | GRUB SCREW | STAINLESS STEEL |
| 7 | DUST CAP | PVC |
| 8 | RETAINING CAM | STAINLESS STEEL |
| 9 | RETAINING SCREW | STAINLESS STEEL |
| 10 | GLAND ADJUSTER | 316 S 11 |
| 11 | LOCK NUT | 316 S 11 |
| 12 | GLAND PACKING | PTFE / GRAPHOIL |
| 13 | BONNET GASKET | 316 S 11 |
| 14 | BONNET SEAL | V PTFE |

BALL VALVE ASSY



| ITEM | COMPONENT | MATERIAL |
|------|----------------|-------------|
| 1 | BODY | 316 S 11 |
| 2 | END CONNECTORS | 316 S 11 |
| 3 | BALL | 316 S 11 |
| 4 | STEM | 316 S 11 |
| 5 | STEM SEAL | RTFE |
| 6 | SEA | PVDF / PEEK |
| 7 | TOP SEAL | RTFE |
| 8 | BODY SEAL | PTFE |
| 9 | PIN | ST. STEEL |
| 10 | LEVER HANDLE | ST. STEEL |
| 11 | POINTER HANDLE | MAZAK 3 |
| 12 | HANDLE SLEEVE | PVC |
| 13 | NUT | A4 ss |
| 14 | WASHER | A4 ss |
| 15 | SPACER | 316 SS |

| DIMENSION TABLE | | | | | | | | | | | |
|-----------------|-----|-----|------|----|----|-----|----|----|----|----|------|
| SIZE | Ab | Ac | B | C | C1 | D | Dv | E | Ev | F | Wt |
| 08 - 1/4" | 100 | 126 | 10 | 51 | 38 | 115 | 50 | 29 | 67 | 31 | 2.2 |
| 10 - 3/8" | 100 | 126 | 10 | 51 | 38 | 115 | 50 | 29 | 67 | 31 | 2.2 |
| 15 - 1/2" | 100 | 126 | 10 | 51 | 38 | 115 | 50 | 29 | 67 | 31 | 2.2 |
| 20 - 3/4" | 100 | 126 | 12.7 | 51 | 38 | 115 | 50 | 31 | 67 | 37 | 2.25 |
| 25 - 1" | 143 | 180 | 19 | 51 | 51 | 165 | 50 | 35 | 67 | 40 | 4.0 |

Sample Part Number **DBBCMP1015NM15NFS**

1/2"NPT (Male x Female) 6000PSI/408Bar Double Block & Bleed Ball Valve [Ball/Needle/Ball Configuration] with PVDF +PTFE/17-4PH Trim. 1/2" NPTF Outlet/1/4"NPT Vent in316ss

| VALVE PART NUMBER and ORDERING TABLE | | | | | | | |
|--------------------------------------|--------------------|---------------------------|----------------------|--------------------------------|--------------------------------|-----------------------------|--|
| Series - Style | Pressure | BORE | Inlet Size/Type | Outlet Size/Type | Vent | * Material | Options |
| DBBB | E=B/N F=B/B | P=6000/408 X=10000/680 | 08 | 08 | 1=1/4"N PT | D - 31803 Du- S - 316 SS | -PH Pointer Handle -TH 'T' Handle St St -LK Lock Kit |
| DBBC | K=B/N/N M=B/N/B | | 10 13 15 19 | NF=NPT(F) NM=NPT(F) | NF=NPT(F) NM=NPT(F) | | 2=1/4BS |

We reserve the right to change specifications stated in this leaflet due to our continuing programme of development.
 All Ball valves have lever handle as standard.

DBB - 01/08



Website: www.colson.co.uk

e-mail: sales@colson.co.uk



Certificate No L RQ 0960294
 ISO 9001 Registered

Park Works, Park Road,
 ELLAND. W. Yorkshire.
 HX5 9HN - England

Tel +44 (0) 845 094 3780
 Fax +44 (0) 845 094 3790